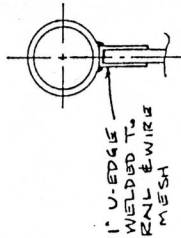
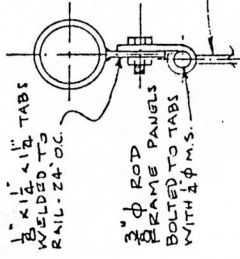


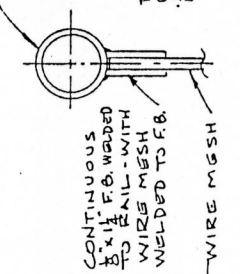
TYPE N: A



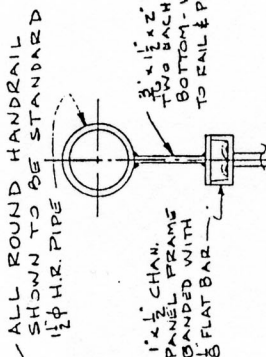
TYPE N: B



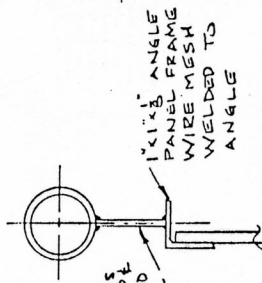
TYPE N: C



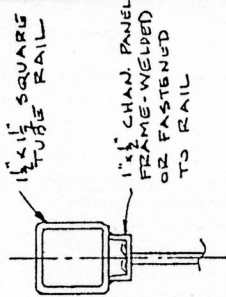
TYPE N: D



TYPE N: E

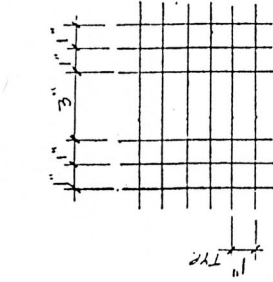


TYPE N: F

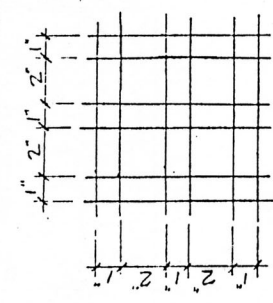


TYPE N: G

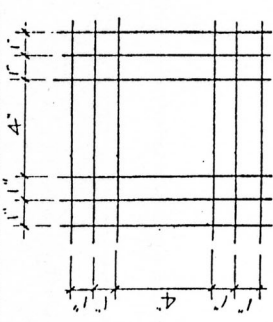
CUSTOM WIRE MESH PATTERNS - OTHERS AVAILABLE



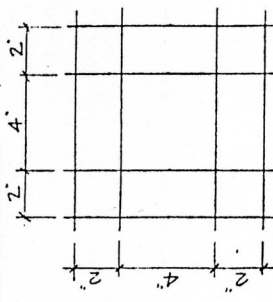
TYPE S-1



TYPE S-2



TYPE S-3



TYPE S-4

SPECIFICATIONS  
FRAMES AVAILABLE - AS SHOWN  
STANDARD FINISH: ONE SHOP  
COAT OF ENAMEL - COLOR AS SELECTED  
SPECIAL FINISHES:  
HOT DIPPED GALVANIZE  
POWDER COATED

**AMERICAN WOVEN WIRE CORP**  
909-340-2333

SCALE: \_\_\_\_\_ APPROVED BY: *AM*  
DATE: \_\_\_\_\_ REVISED: \_\_\_\_\_

STANDARD WIRE MESH RAILING  
INSERT PANELS WITH CONNECTIONS